

CEDAR RAPIDS, IOWA



J.E. ADAMS INDUSTRIES
OWNERS MANUAL

MODEL 29015-29018

- PAGE 2-----SPECIFICATIONS
- PAGES 2 & 3----INSTALLATION
- PAGES 3 – 6----PROGRAMMING
- PAGE 6-----OPERATING
- PAGE 6-----MAINTENANCE
- PAGES 6 & 7--- TROUBLESHOOTING
- PAGES 8 – 10---PARTS LIST
- PAGE 11 – 17---WIRE DIAGRAMS

SPECIFICATIONS:

Unit specifications:

Voltage: 110v, 60Hz
Amperage: (1)30 amp service is required for this unit
Weight: 260 lbs with pallet attached

Vac specifications:

Motors: (3) Ametek 110v motors
Fuses: (3) 10 amp inline fuses
Relays: (2) contactors SPDT 30 amp rating per contact

Scent specifications:

Compressor: (1) Thomas 110v, 1/12th hp compressor
Solenoid: (1) block solenoid 24VAC
Relays: (1) 24AC Allen Bradley socket mount relays- 15 amps per contact

Installation Instructions:

- Determine location to mount unit
- Run 30 amp service to that location (*NOTE UNIT HAS WIRE PROVIDED UNDERNEATH TO CONNECT INCOMING POWER SUPPLY*)
- Mount unit to location and use fig. 1 for mount pattern
- If unit is vault ready configuration see fig. 1 for mounting and fig. 2 for vault tube location.

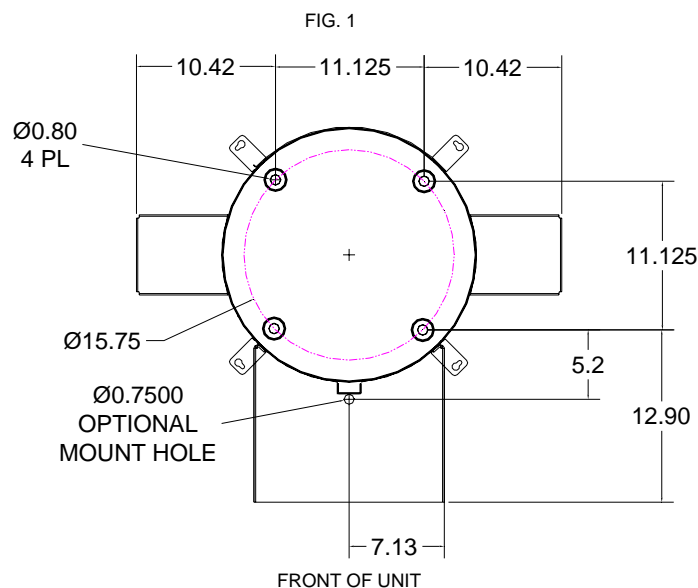
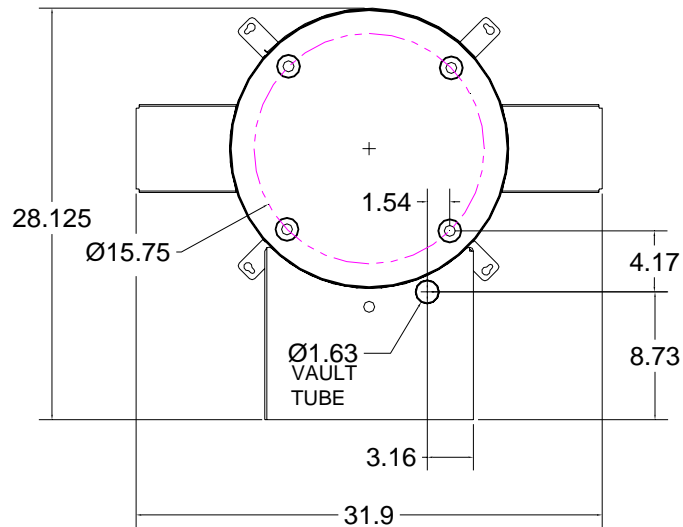


FIG. 2 (VAULT TUBE LOCATION)
TOP VIEW



- Once unit has been installed and connected to power, pour scent into the bottles located in the bottom door and attach lids to appropriate bottles.
- Turn unit on and move to program instructions.

Programming Instructions:

Coin acceptor:

- No programming to acceptor needed if unit was purchased with the standard Imomex Z32 electronic acceptor (8149-92 our part number) is pre-programmed to accept US quarters, .984 tokens, US \$1 coin and 1.073 token. Acceptor is pre-programmed before it is sent to J.E. Adams.
- If different acceptor was purchased, see additional literature sent along with unit for programming info.

Bill acceptor:

- Bill acceptor comes pre programmed from J.E. Adams and should not require any changes. If additional programming is needed to acceptors please refer to additional literature sent along with this unit.

Display:

- Unit may be programmed when received depending on information given at that the time of order.
- To program follow the instructions below.

Display programming with remote:

- 1) Press the red power button.

- 2) Timer will display 0000. At this time type in 4 digit access code. Note code will be 1234 until changed by customer.
- 3) Once code has been entered display should read ok. If display does not read ok, repeat step 1 and 2.
- 4) Press **CH +** button. Timer will display coin value. This should \$.25 and should not be changed.
- 5) Press the **CH +** button. Display will now read (**A: 30**) or may be a different time. (**A**) Will be the time per coin for the **SCENT**. Set desired time per coin by using the **VOL -** to decrease or the **VOL +** to increase. Once time is entered move to next step.
- 6) Press the **CH +** button. Display will now read (**B: 30**) or may be different time. (**B**) Will be the time per coin for **VAC**. Set desired time per coin by using the **VOL -** to decrease or the **VOL +** to increase. Once time is entered move to next step.
- 7) Press the **CH +** button. Display will now read (**C: 30**) or may be different time. (**C**) Will be the time per coin for **TURBO**. Set desired time per coin by using the **VOL -** to decrease or the **VOL +** to increase. Once time is entered move to next step.
- 8) Press the **CH +** button. Display will now read **D**. **D** is not used.
- 9) Press the **CH +** button. Display will now read **E**. **E** is not used.
- 10) Press the **CH +** button. Display will now read **F**. **F** is not used.
- 11) Press the **CH +** button. Display will now read (on A). This is the number of coins to start **SCENT**. Use the **VOL -** and **VOL +** to adjust. Once this is done press the **CH+** button and repeat for (B) **VAC** and (C) **TURBO**.
- 12) Press the **CH +** button. Display will read bonus time. Set if desired. See explanation at the end programming instructions.
- 13) Press the **CH +** button. Display will read debit mode. Set if desired. See explanation at the end programming instructions.
- 14) Press the **CH +** button. Display will read delayed start. Set if desired. See explanation at the end programming instructions.
- 15) Press the **CH +** button. Display will read **HLxx**. Set if desired. See explanation at the end programming instructions.
- 16) Press the **CH +** button. Display will read Restart off or restart on depending on what is set. Restart off will require a person to put in full amount after unit is turned off to reactivate. Restart on allows for additional coins to be put in the machine to keep unit running. To set use **VOL -** or **VOL +** to change.
- 17) Press the **CH +** button. Display will now read **STD** or **USER** or **MIX**. To make a custom message use **VOL +** button to scroll to **USER**. At this point press and hold **CH +** button until original message appears. At this time you may change the message simply by using the **VOL -** or **VOL +** buttons to change letters. **Once message has been entered you must put the symbol / at the end of message.** This will tell display that this is the end of the message.

- 18) Press the **CH +** button now 5 more times to exit programming.
- 19) Unit should now be programmed.

Program definitions:

- Bonus time settings:
 - Amount of time set in bonus time is added to regular time per coin/pulse (e.g. if you want to give 45 seconds for bonus time and your regular time per coin is 30 seconds, you would set bonus time at 00:15)
 - Bonus is disabled by setting bonus time to 00:00.
 - If bonus time is set to less than one minute, bonus time is added when bonus coin is reached and every coin after that until time expires.
 - If bonus time is set at 1:00 or more, bonus will be a "one time" bonus. Bonus time will only be added for bonus coin or multiples of bonus coin (e.g. 16th coin, 32nd coin, etc). Any other coin will only receive regular time per coin.
 - If bonus time is set to 99:00, when bonus coin is deposited, timer will show "-on-" and timer will continue to run until coin switch wire is shorted to ground by a loop detector or other switch closure for a minimum of two seconds.

- Debit and credit mode:
 - Debit mode: As coins are deposited display shows "\$1.75 MORE, \$1.50 MORE, \$1.25 MORE" etc. until start price is reached. Once start price is reached display switches to time accumulating until no more coins have been deposited.
 - Credit mode: As coins are deposited display shows money accumulating (\$.25, \$.50, \$.75 etc). If timer is also set to delayed start mode timer will continue to show money accumulating until no more coins have been deposited. If timer is set to instant start, as soon as start price is reached, timer will change to time counting down.
 - Both mode: As coins are deposited display shows money accumulating (\$.25, \$.50, \$.75 etc). If start price is not reached, after 5 seconds timer will alternate between "add \$x.xx more" and amount of money already deposited.

Display programming with push button:

- Unit can be programmed using buttons that are located inside display. One is labeled **S2**, which is used to change from item to item. One is labeled **S1** which is used to set desired value. If you hold down **S1**

this will cause numbers to decrease. If you repeatedly push **S1** numbers will increase.

- When programming with buttons use same instructions as remote except for the following. Where it says to press **CH +** use **S2** and where it says to use **VOL +** or **-** use **S1**.

Operating Instructions:

- Select desired function.
- Insert coins or bills to start desired function.
- If Scent button is selected use rotary switch to the right of button to select desired scent.
- If other function is selected other than original selected item unit will recalculate timer based on the amount of money it takes to start the specific function.
- Once service is used, hang up hose.

Maintenance:

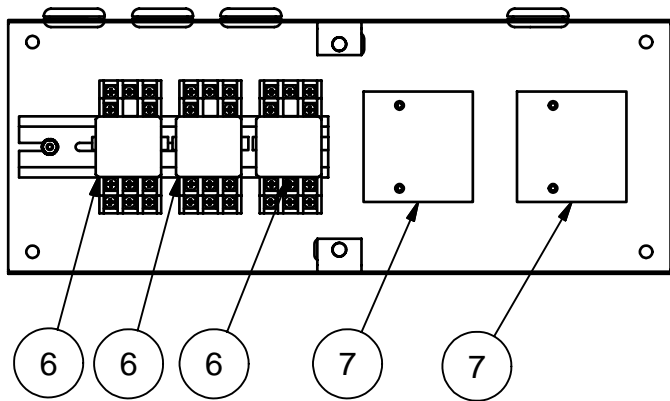
- Filter bags should be taken out weekly and shaken out. Also it might be a good idea to keep a new set of bags on hand so that once a month or longer you can take original bags out and wash them.
- Check vac hose for cracks on a weekly basis.
- Check scent bottles to assure that they are full.
- Clean canister with a stainless steel cleaner as needed.
- Check motor brushes approx. every 3 months for excessive wear. Motor brushes should be changed if they are shorter than ¼". **Please disconnect power before doing this.**
- Check all shampoo lines and assembly for any signs of wear.

Troubleshooting:

DISCONNECT POWER BEFORE SERVICING

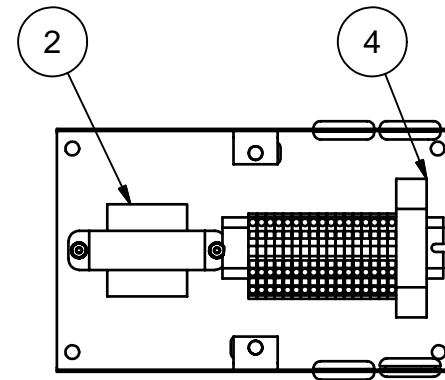
| Problem | Possible cause | Solution |
|-------------------------|---|------------------------------|
| Unit is not powered | Breaker inside unit is not in the on position | Flip breaker on |
| Display is not powering | Breaker inside unit is not in the on position | Flip breaker on |
| | Check transformer inside main power box in unit. Is there 24VAC at output terminal? | Replace transformer (8131-2) |

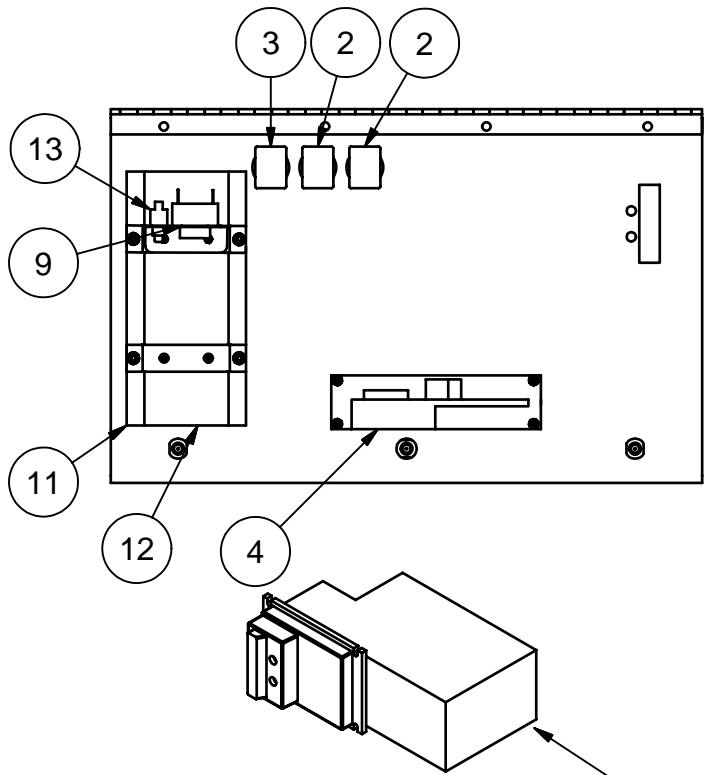
| | | |
|---|---|---|
| Display reads "fail" | Coin acceptor putting out continuous pulse Program in display may be lost | Press mode button on display. If fail does not go away replace coin acceptor. (8149-92) Reprogram display. If fail goes away and then comes back, replace battery in display. |
| Unit keeps blowing my breaker from my incoming power source | Inadequate wire size supplied to machine Wrong size breaker | Call electrician and install proper wire size for 30amp service versus length or run. Install correct breaker(only use wire size that is adequate to handle 30 amp breaker) |
| Fuses for vac motors keep blowing. | Inadequate wire size supplied to machine Motor brushes may be bad or too short | Call electrician and install proper wire size for 30amp service versus length or run. Replace motor brushes (8055BR) |
| Vac motors will not shut off after display has timed out | Check contactors for vac and turbo located in relay control box | If contact is stuck open replace with new contactor. (5967D001) |
| Scent keeps running after display has timed out | Check socket mount relay labeled shampoo or spot for contact stuck. | If contact is stuck open replace with new relay(8768) |
| Unit has lost suction | Vac hose clogged Filter bags need cleaned Vac hose is damaged Cleanout door gaskets torn or worn | Clean out debris from vac hose Clean out filter bags or replace (8076) Replace vac hose (2036) Replace gaskets (8159) |



| BILL OF MATERIALS | | | |
|-------------------|-----------|-------------------------------|-----|
| ITEM | PART NUM | DESCRIPTION | QTY |
| 1 | 29000-19W | RELAY CONTROL PLATE WELDMENT | 1 |
| 2 | 8768B | RELAY DIN MOUNT BLOCK | 3 |
| 3 | 5639D6 | RUBBER GROMMET | 4 |
| 4 | 28000-95 | DIN RAIL 7IN | 1 |
| 5 | 8157 | NUT, #6-32 KEPP NUT STAINLESS | 2 |
| 6 | 8768 | RELAY 24VAC | 3 |
| 7 | 5967D001 | CONTACTOR RELAY | 2 |

| BILL OF MATERIALS | | | |
|-------------------|-----------|-------------------------------|-----|
| ITEM | PART NUM | DESCRIPTION | QTY |
| 1 | 29000-17W | MAIN CONTROL WELDMENT | 1 |
| 2 | 8131-2 | TRANSFORMER, 110/220-24 1.66A | 1 |
| 3 | 5639D6 | RUBBER GROMMET | 4 |
| 4 | 28000-128 | MAGNETIC CIRCUIT BREAKER | 1 |
| 5 | 28000-81 | 3 CONDUCTOR EARTH GROUND | 1 |
| 6 | 28000-80 | 3 CONDUCTOR TERMINAL BLOCK | 16 |
| 7 | 29000-79 | DIN RAIL CUT TO 5IN | 1 |
| 8 | 8157 | NUT, #6-32 KEPP NUT STAINLESS | 4 |

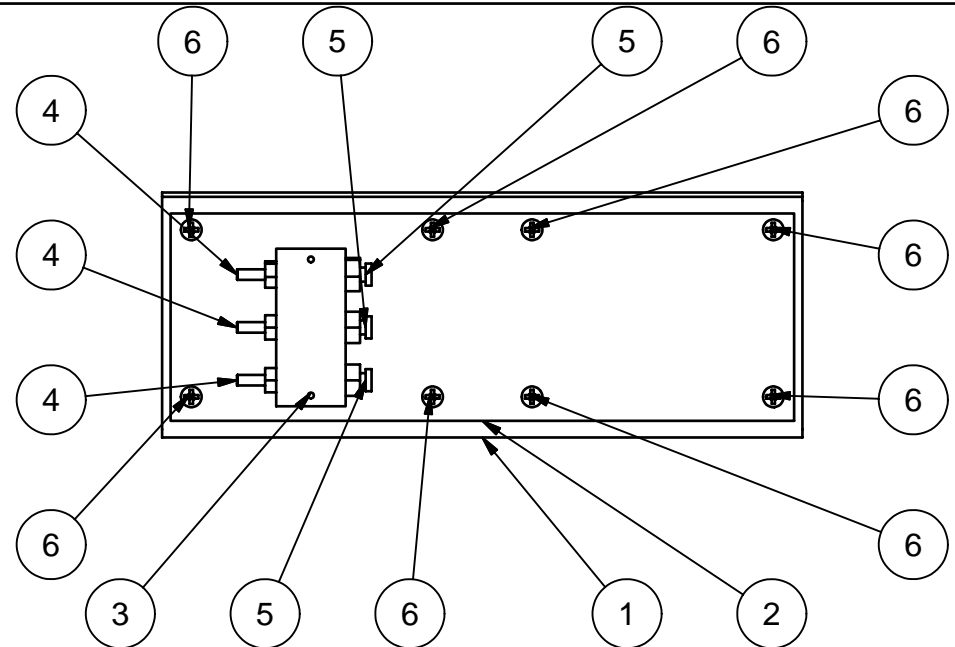


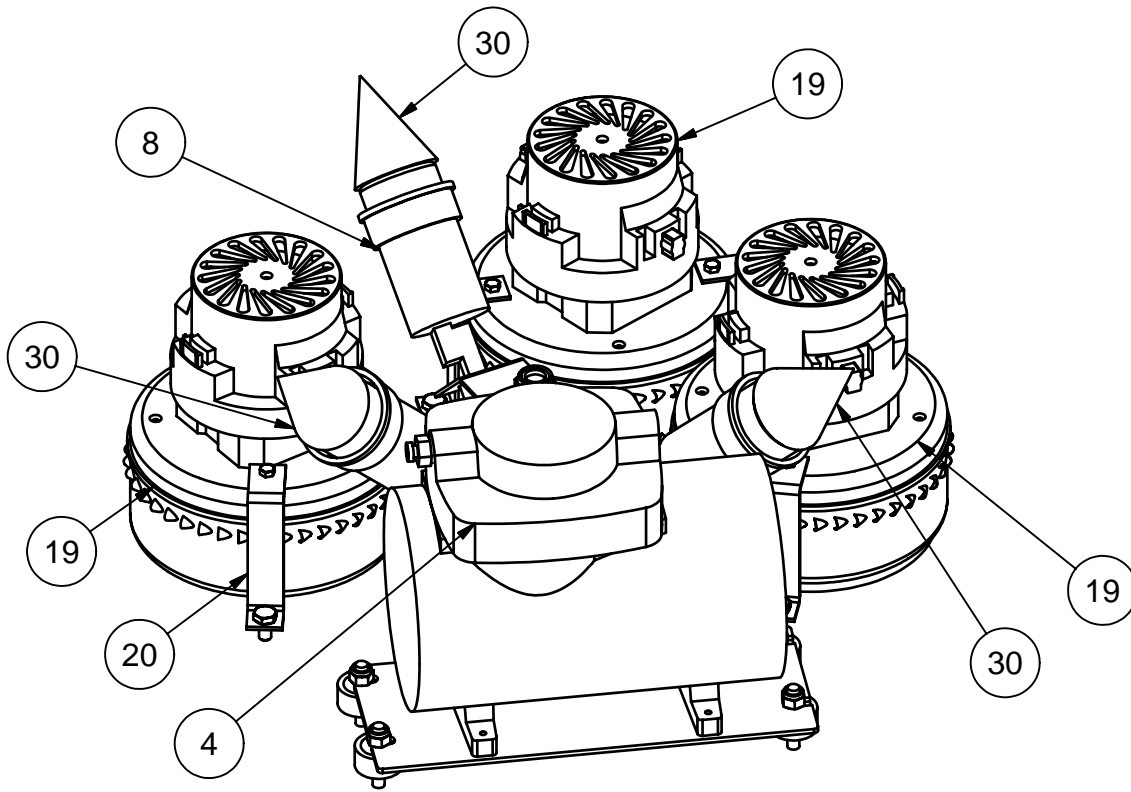


8130-6 MARS BILL VALIDATOR

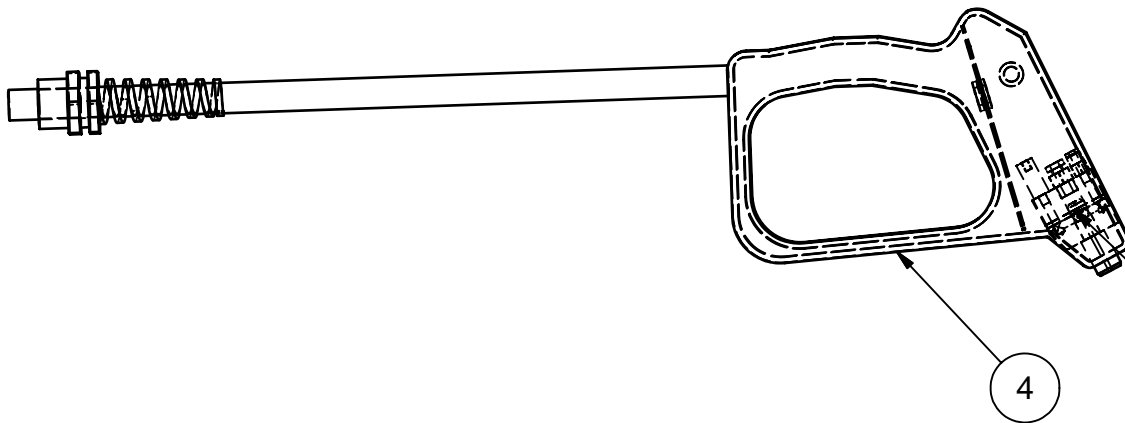
| BILL OF MATERIALS | | | |
|-------------------|-------------|--------------------------------------|-----|
| ITEM | PART NUMB | DESCRIPTION | QTY |
| 1 | 29000-7W | CONTROL DOOR WELDMENT | 1 |
| 2 | 20000-72A | SWITCH, ILLUMINATED PUSHBUTTON | 2 |
| 3 | 20000-72A-1 | SWITCH, ILLUMINATED PUSHBUTTON | 1 |
| 4 | 8149-92 | IMONEX- US QTR. AND DOLLAR AND TOKEN | 1 |
| 5 | 8157 | NUT, #6-32 KEPP NUT STAINLESS | 4 |
| 6 | 29000-24 | DISPLAY BRACKET | 2 |
| 7 | 5629D2 | #8 x 1/2 SELF TAPPING SCREW | 4 |
| 8 | 5611D2 | NUT, 10-24 UNC KEPP- ZINC | 4 |
| 9 | 8000-11 | ALARM, LAST COIN ALERT | 1 |
| 10 | 29000-25 | HORN BRACKET | 1 |
| 11 | 29000-34 | LEXAN WINDOW | 1 |
| 12 | 8000-15 | BIG DIXMOR DISPLAY | 1 |
| 13 | 8726 | PUSH BUTTON | 1 |
| 14 | 8958-1 | MEDECO SCREW LOCK | 3 |
| 15 | 8659-24 | LOCK COLLAR -SS | 3 |

| BILL OF MATERIALS | | | |
|-------------------|-----------|-----------------------------|-----|
| ITEM | PART NUM | DESCRIPTION | QTY |
| 1 | 29000-29W | PUMP BRACKET WELDMENT | 1 |
| 2 | 29015-1 | SOLENOID CONTROL PLATE | 1 |
| 3 | 5859D001 | SOLENOID BLOCK, 24V/60HZ | 1 |
| 4 | 8840 | 1/8 NPT HOSE BARB FIT | 3 |
| 5 | 5803D2 | PUSHLOCK FITTING, 1/8OD | 3 |
| 6 | 5636D1 | #10-24 PHIL. PAN HEAD SCREW | 8 |





| BILL OF MATERIALS | | | |
|-------------------|-----------|------------------------|-----|
| ITEM | PART NUM | DESCRIPTION | QTY |
| 4 | 29000-37A | COMPRESSOR ASSEMBLY | 1 |
| 6 | 11000-15 | SHAMPOO BRUSH ASSEMBLY | 1 |
| 8 | 29000-30A | LIGHT BRACKET ASSEMBLY | 1 |
| 18 | 8057 | MOTOR GASKET | 2 |
| 19 | 8055 | MOTOR, AMETEK 115V | 3 |
| 20 | 28000-36 | MOTOR MOUNT | 6 |
| 30 | 8925 | FLOURESCENT BULB | 3 |



| BILL OF MATERIALS | | | |
|-------------------|----------|--------------------|-----|
| ITEM | PART NUM | DESCRIPTION | QTY |
| 4 | 8898 | SCENT GUN ASSEMBLY | 1 |

8813 SPRAY BLOCK ASSEMBLY

DISPLAY

HOLE FOR MACHINE WIRING

HOLE FOR CC WIRING

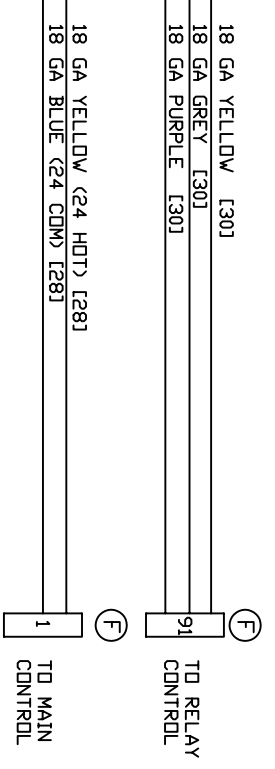
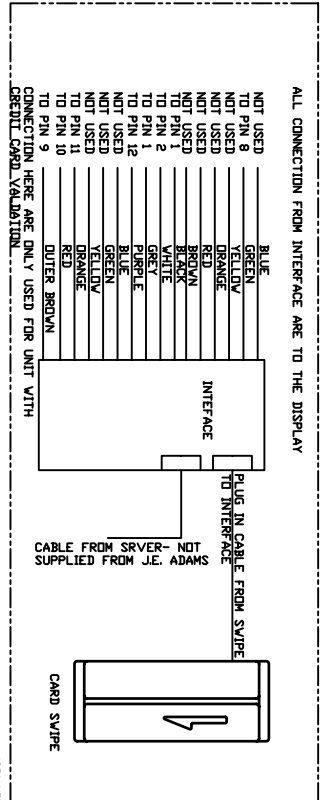
HORN THIS SIDE

DOOR S29015-2 OF 8

(F) FEMALE CONNECTOR

(M) MALE CONNECTOR

1 2 3 4 5 6 7 8 9 10 11 12



HORN

18GA BLUE [E16]

18GA YELLOW [E16]

26GA RED [E161]

26GA RED [E161]

PUSH BUTTON

COIN MECH

RED/GREEN

RED/GREEN

BLACK

YELLOW



BILL ACCEPTOR

LOCATED IN VALIDATOR BOX

BROWN

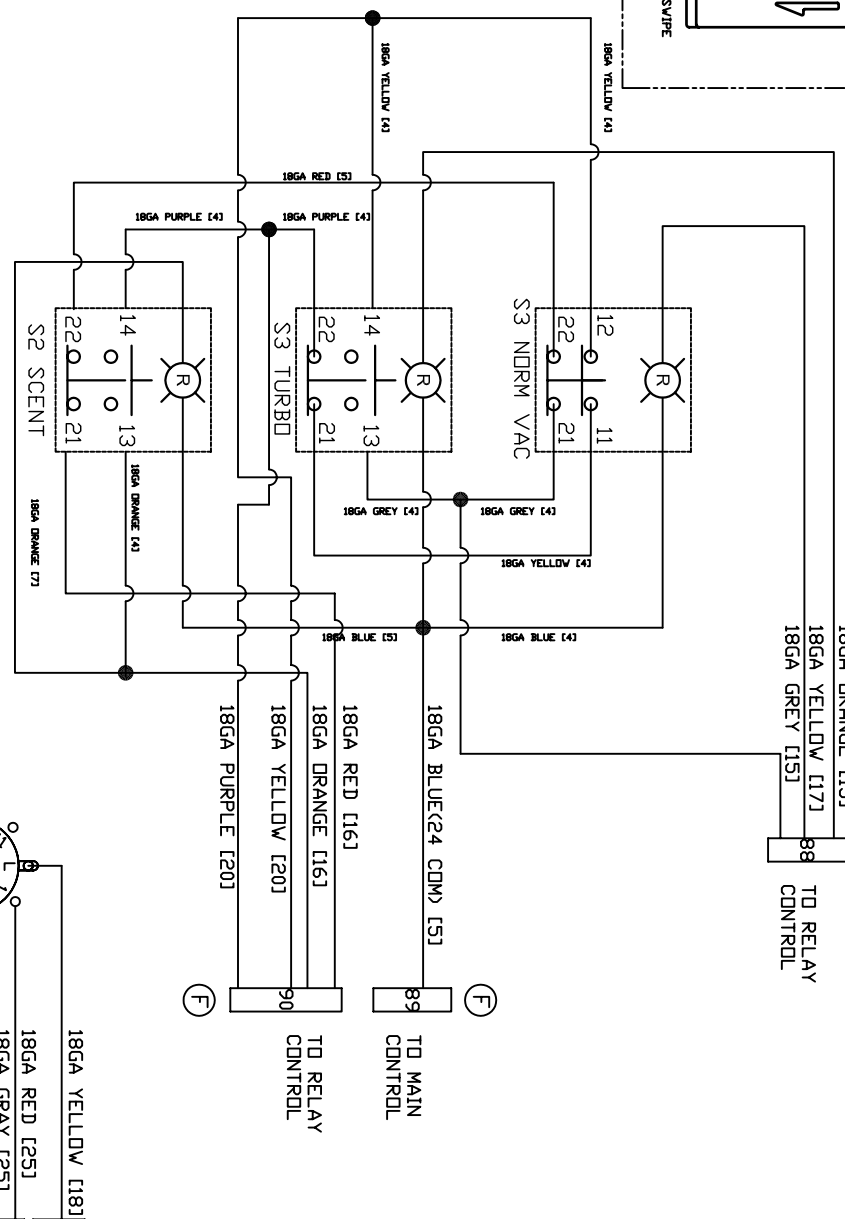
ORANGE

BLACK

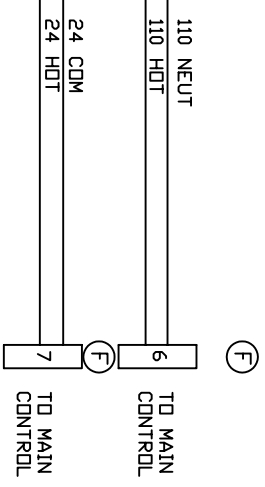
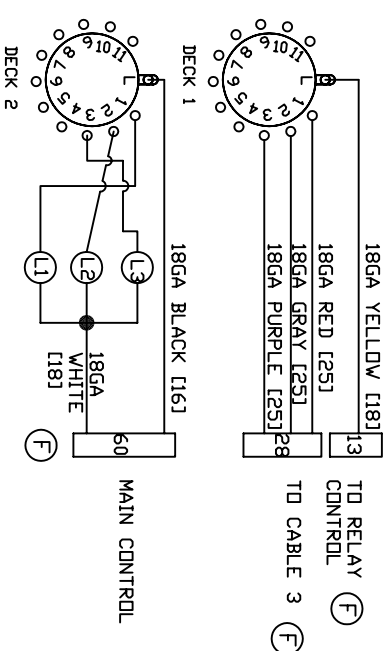
WHITE

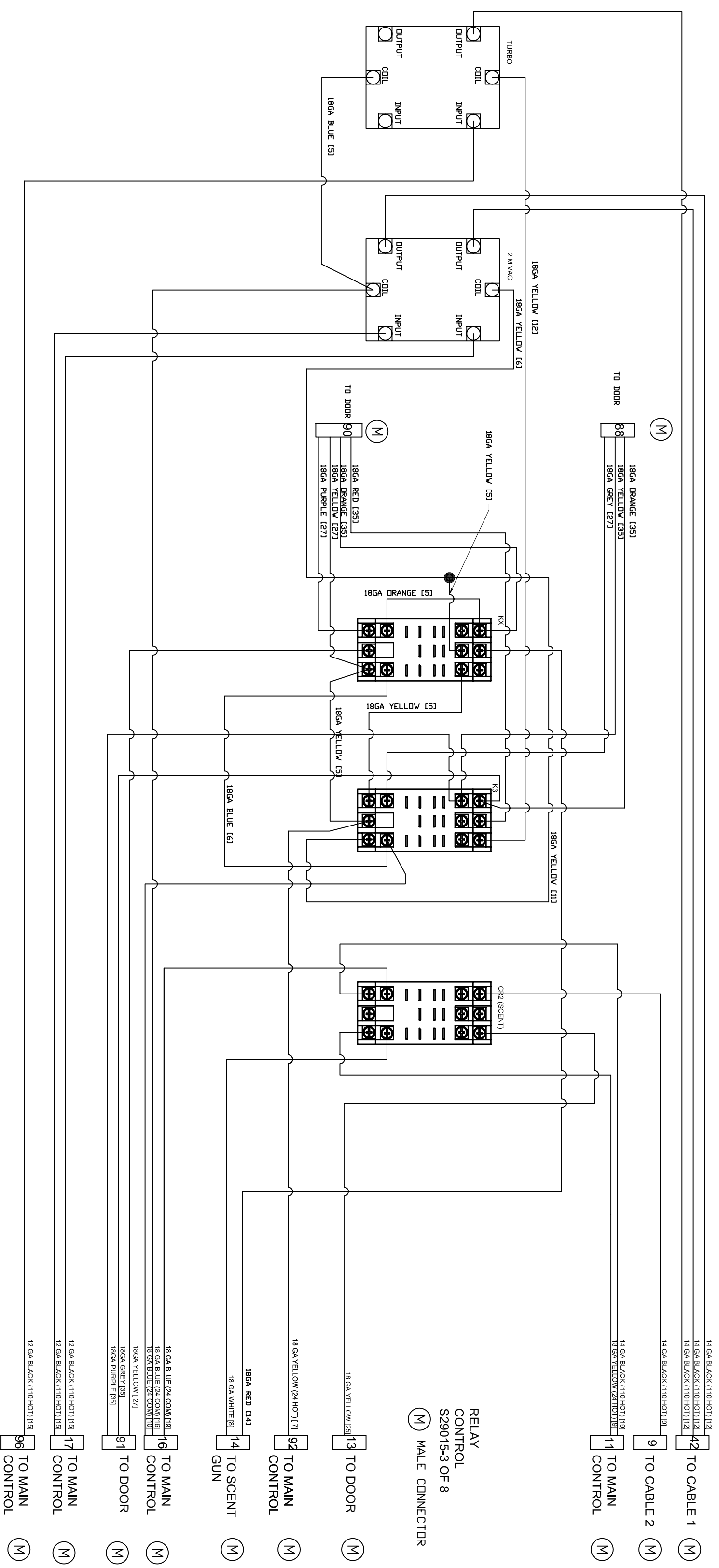
GREEN

GROUND TO BILL VAL FACEPLATE - SCREW FOR HANDLE

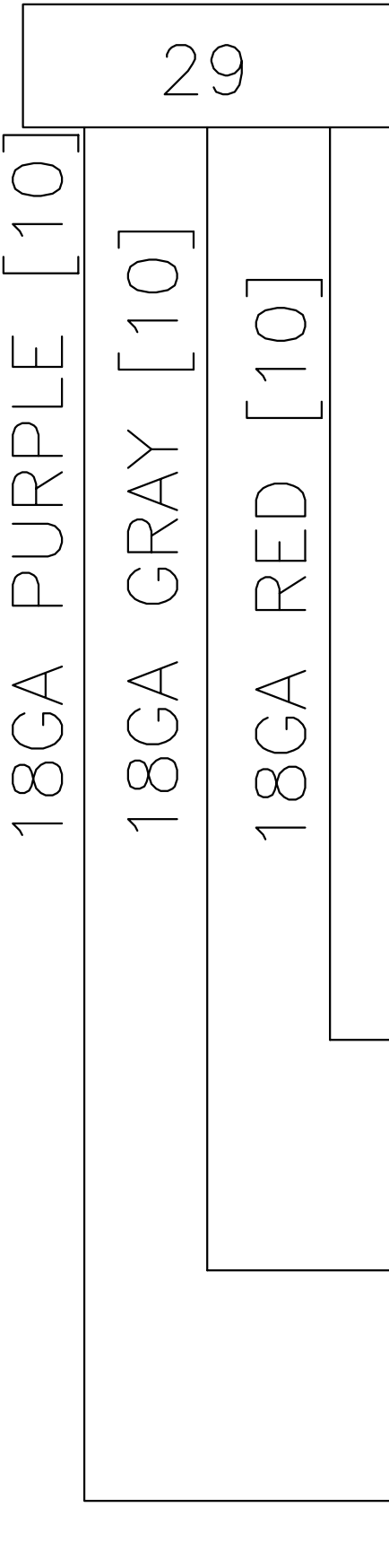


CLOSET TO KNOB





RELAY CONTROL
 S29015-3 OF 8
 (M) MALE CONNECTOR

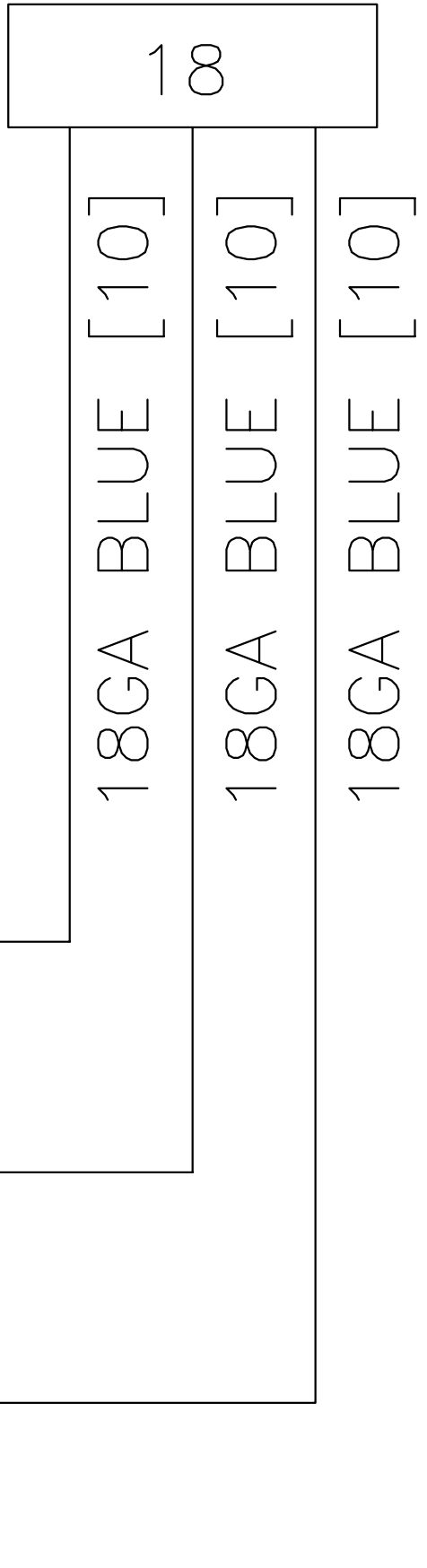


TO CABLE 3

(M)

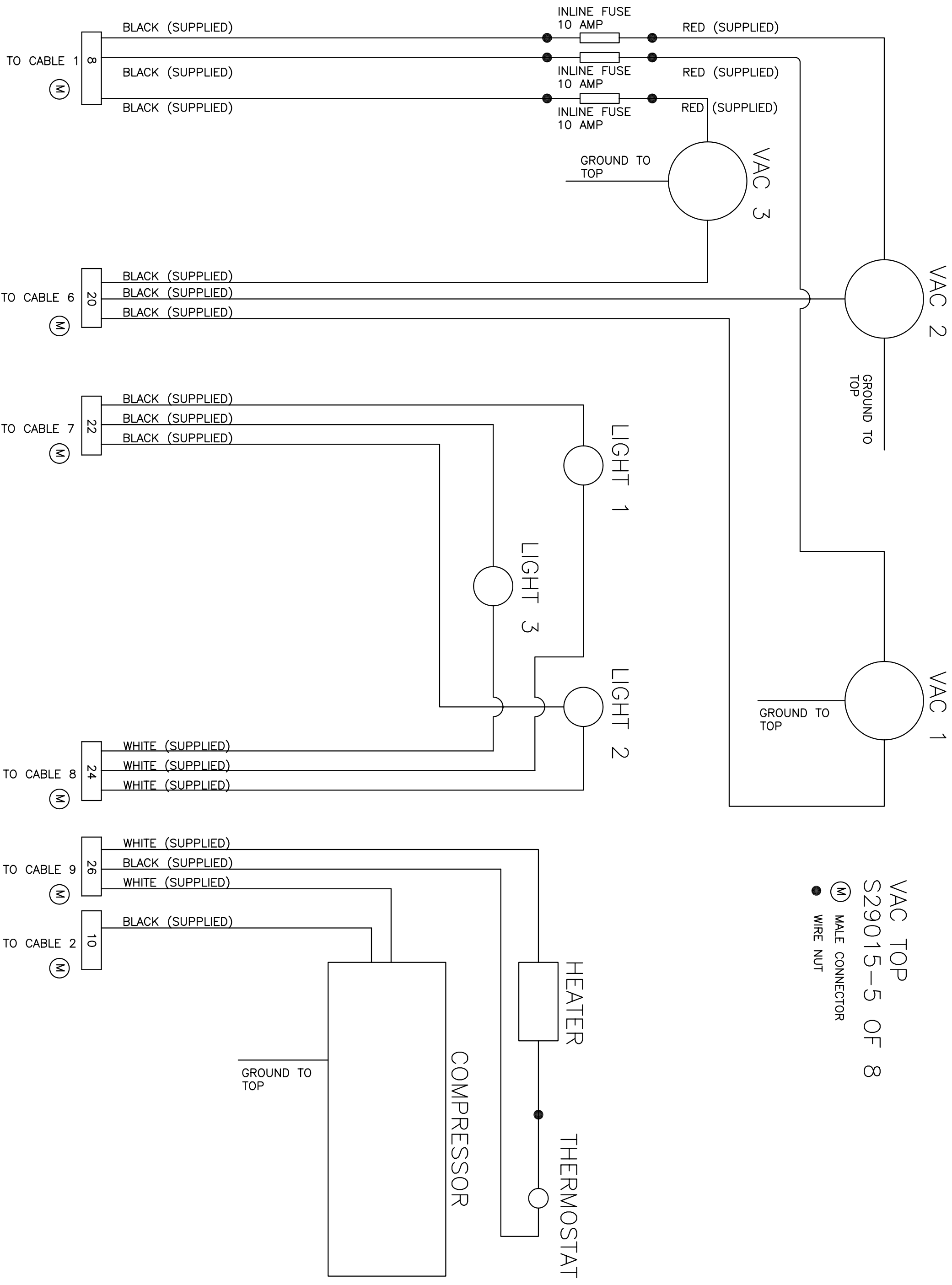
(M) MALE CONNECTOR

SOLENOID ASSEMBLY
S29015-4 OF 8

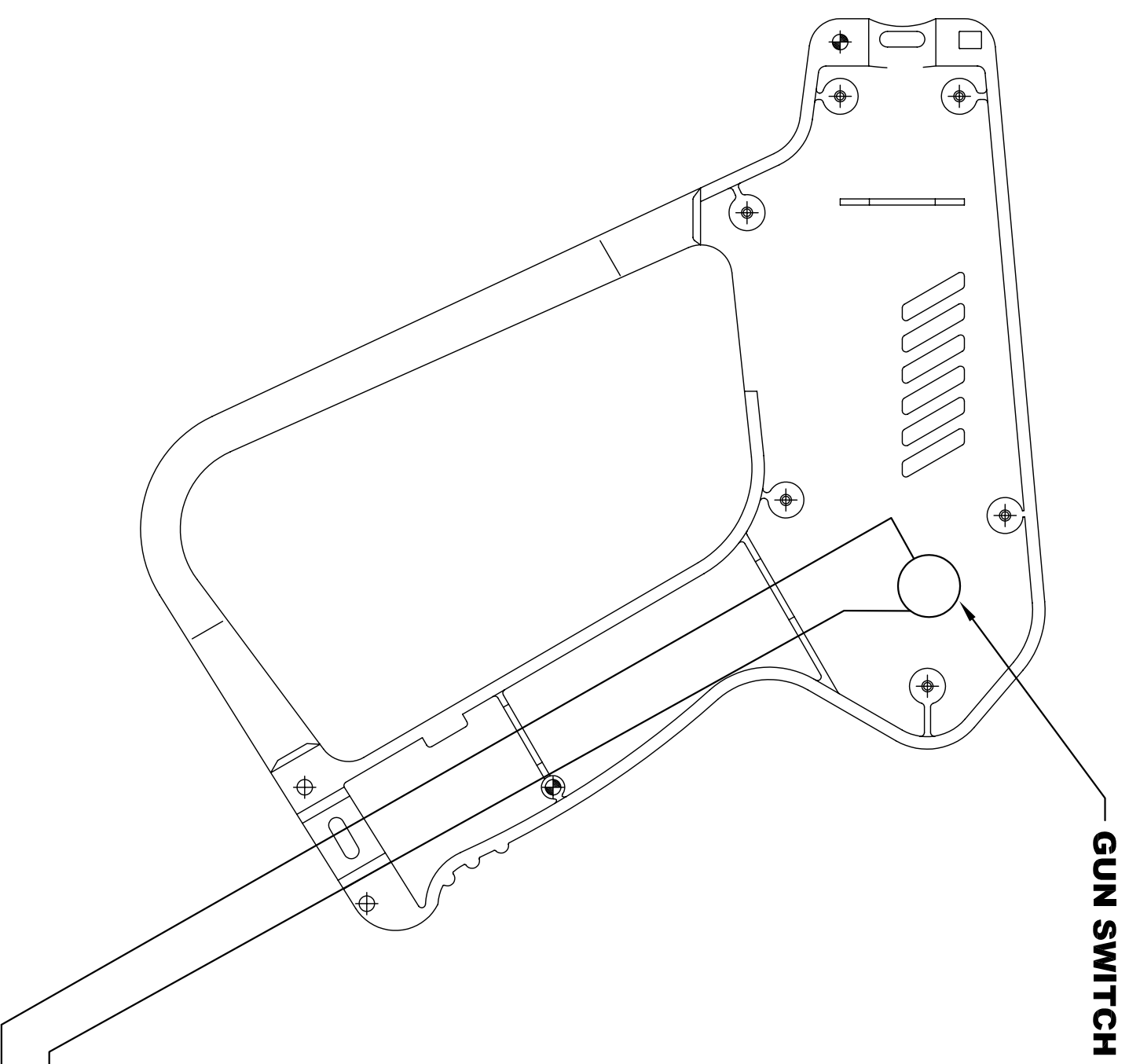


TO CABLE 5

(M)



VAC TOP
 S29015-5 OF 8
 (M) MALE CONNECTOR
 ● WIRE NUT



GUN SWITCH

**SCENT HOSE ASSEMBLY
S29005- 6 OF 8**

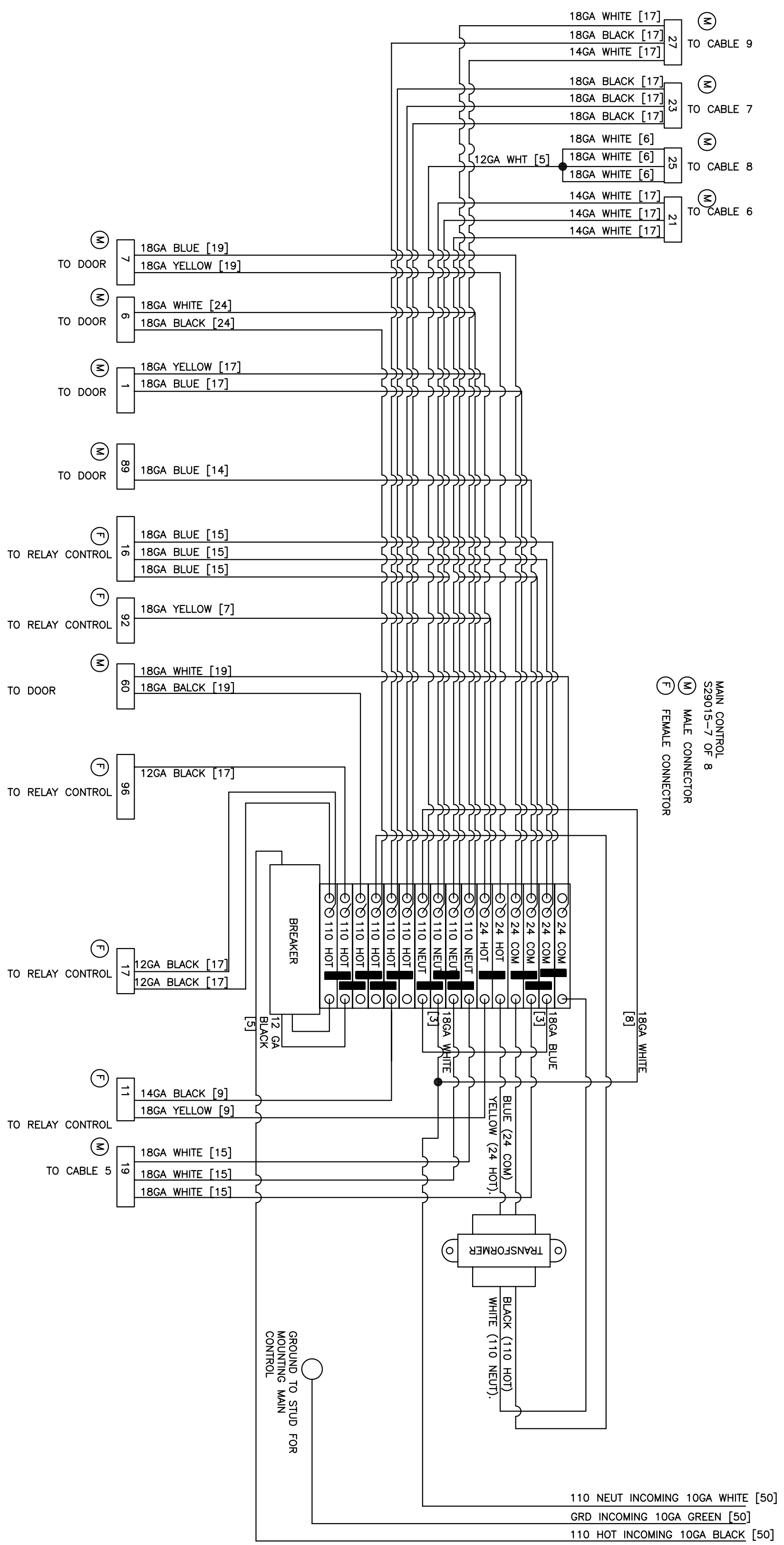
F FEMALE CONNECTOR

**$\frac{1}{8}$ " TUBE 17'
 $\frac{3}{16}$ " TUBE 20'**

**26 GA RED [20']
26 GA RED [20']**

F
14

TO RELAY CONTROL



MAIN CONTROL
S29015-7 OF 8

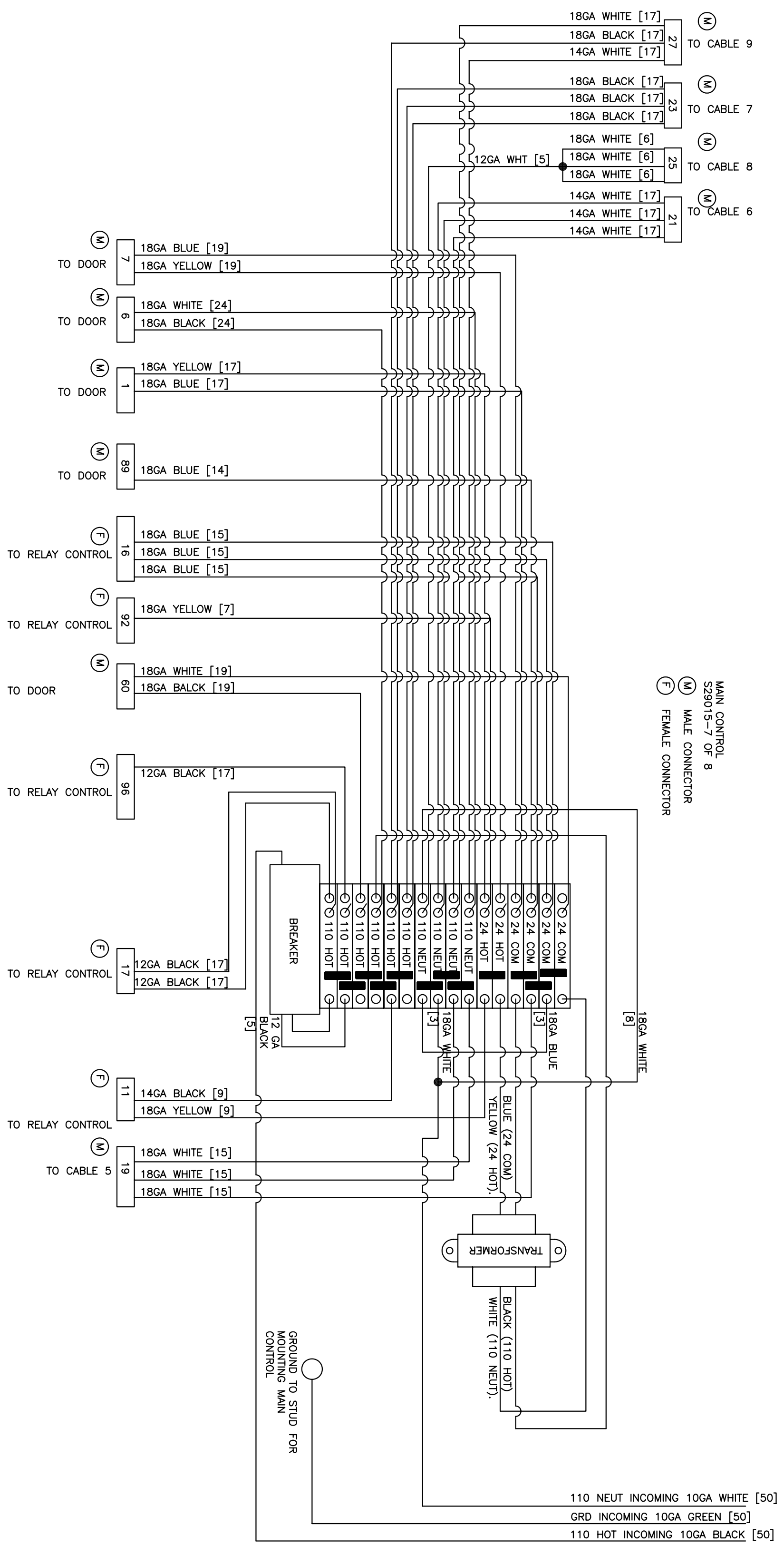
(M) MALE CONNECTOR
(F) FEMALE CONNECTOR

GROUND TO STUD FOR
MOUNTING MAIN
CONTROL

110 NEUT INCOMING 10GA WHITE [50]
GRD INCOMING 10GA GREEN [50]
110 HOT INCOMING 10GA BLACK [50]

TRANSFORMER

BREAKER



CABLE ASSEMBLY
S29015-8 OF 8

(M) MALE CONNECTOR

(F) FEMALE CONNECTOR

